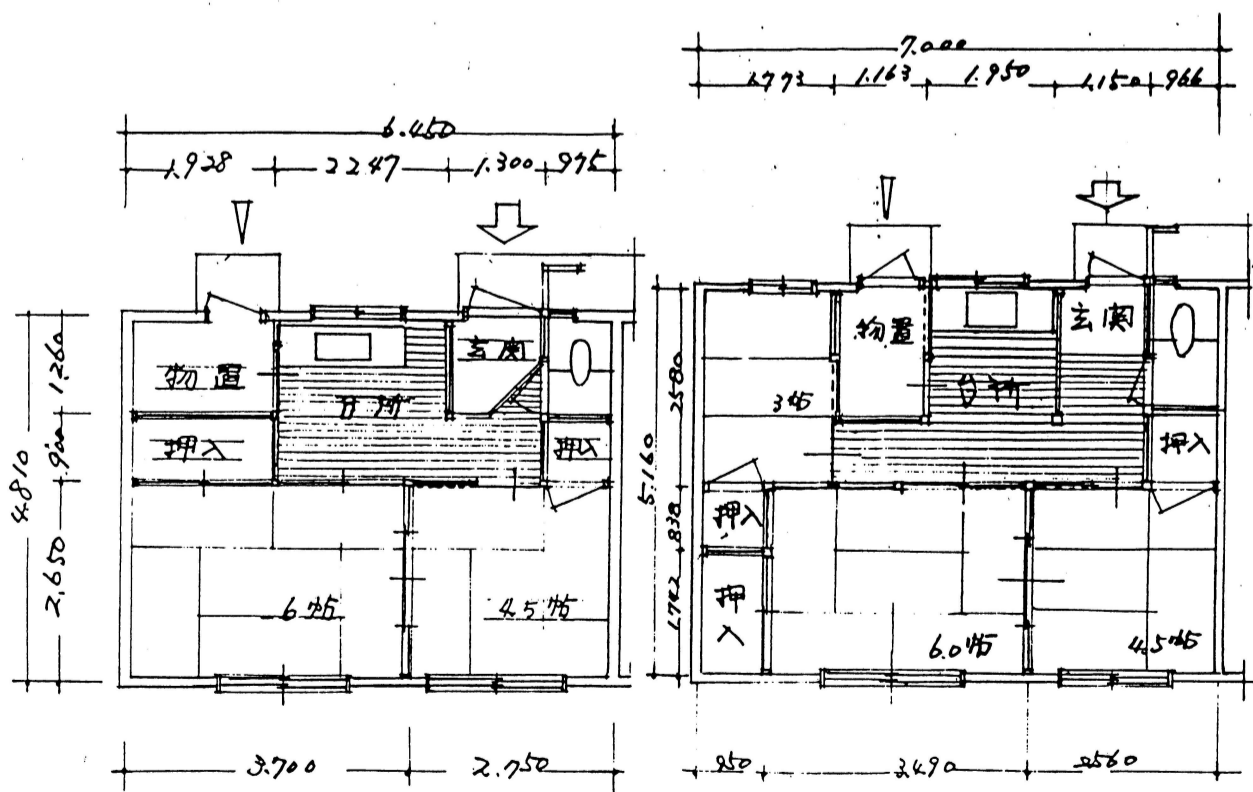
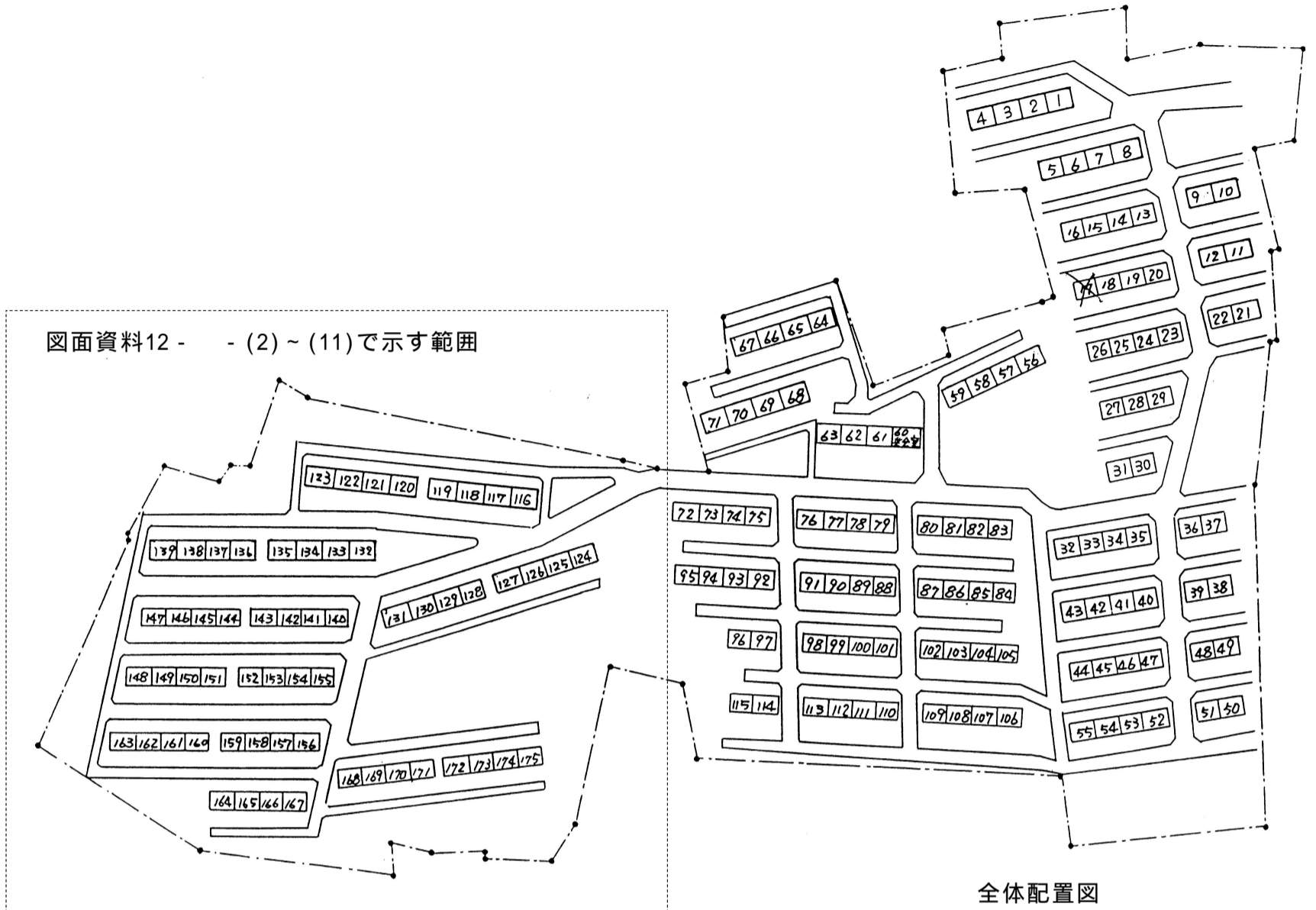


図面資料12 - (1) : 既存市営住宅図 (新屋比内町)

参考図



○ 1種
 $7.000 \times 5.160 = 36.12 \text{ m}^2$
 = 36.1

○ 2種
 $6.450 \times 4.810 = 31.02 \text{ m}^2$
 = 31.0

2種簡耐平家建(55-17N-2K型) 1種簡耐平家建(55-17N-3K)
 平面図 S=400